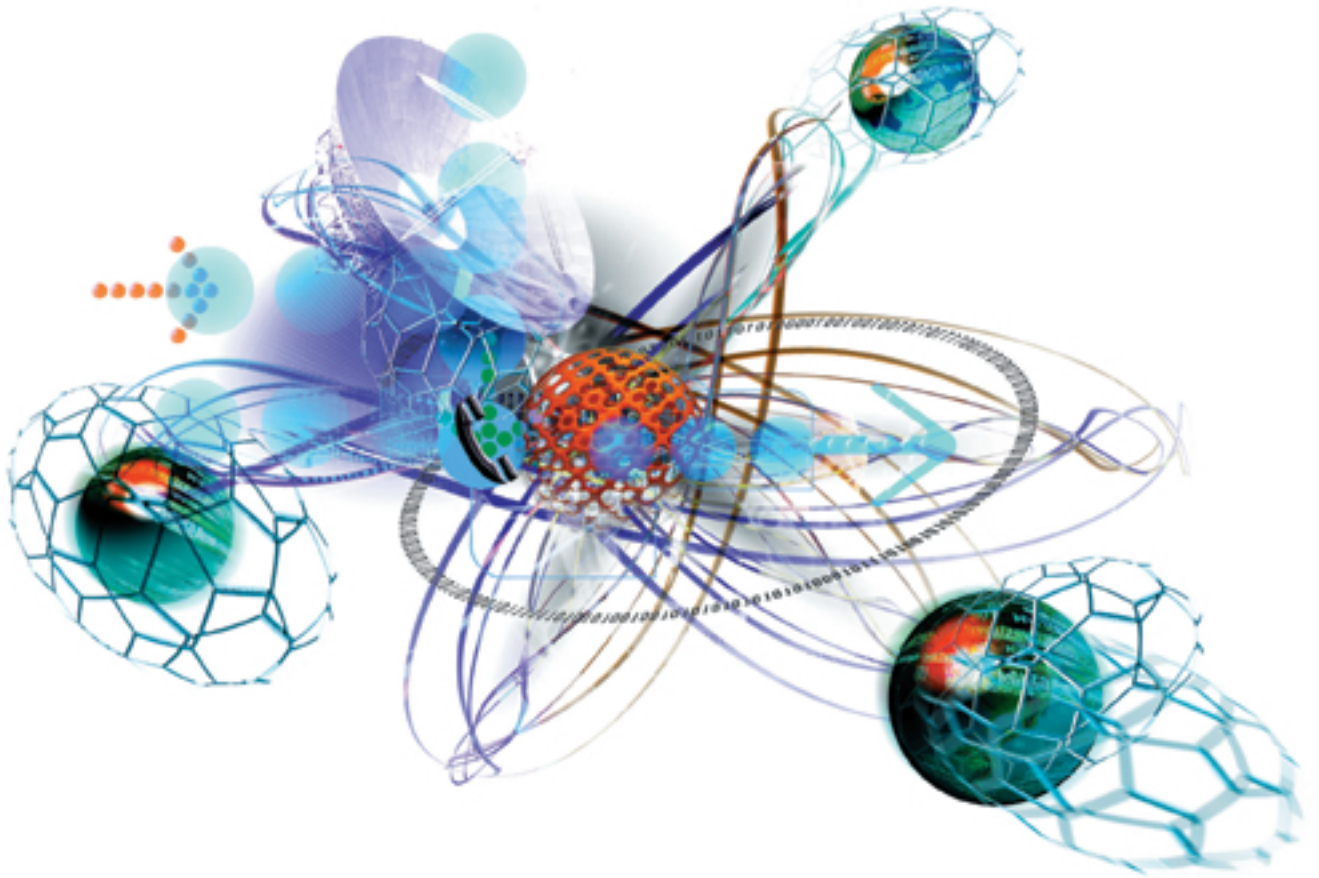


Moving?



Relocating your telecommunications infrastructure involves thousands of time-consuming decisions. On the day of your move you only have one chance to do it right. Look to the experts at Connectivity Services, Inc. (CSI) for turn-key relocation services without big project management fees.

Where the next generation of telecommunications begins...

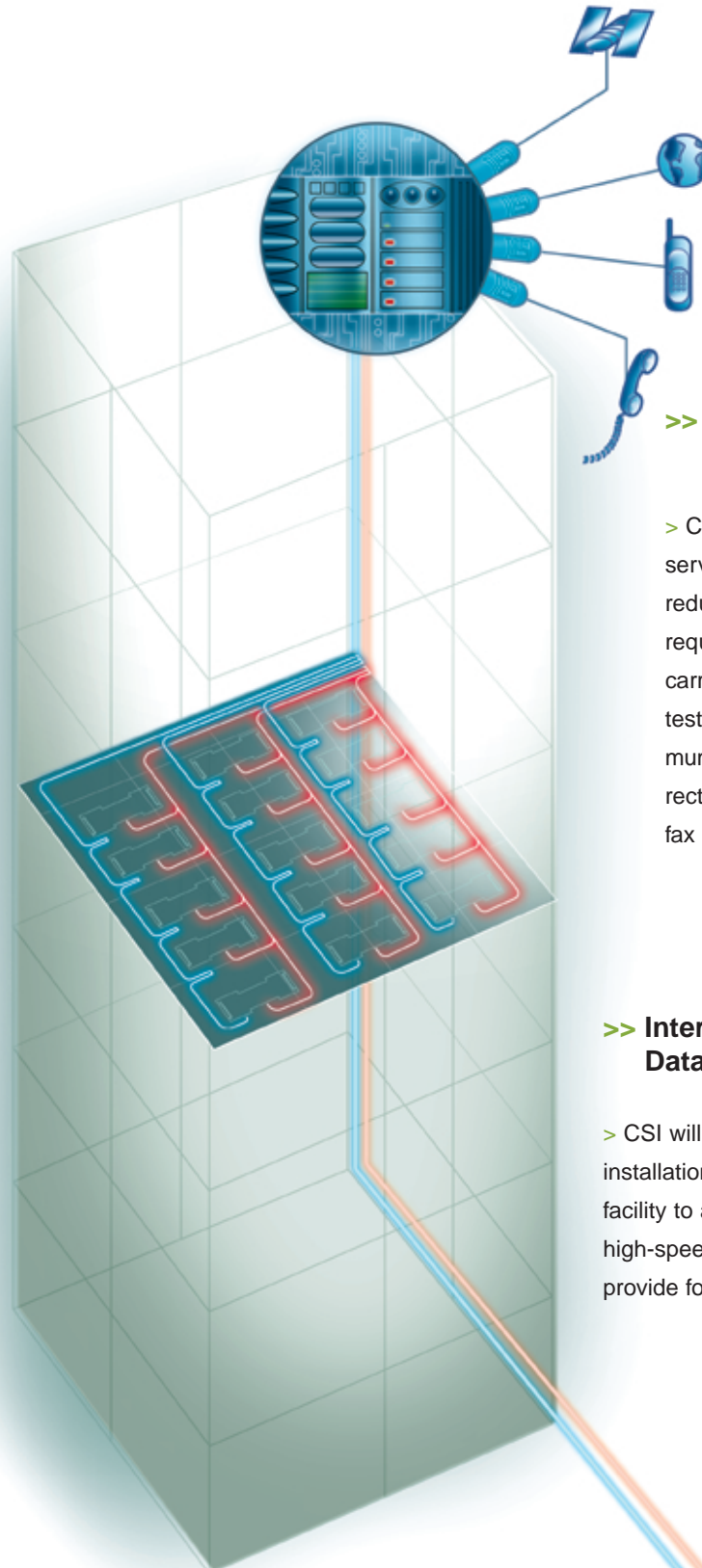
>> Telephone System & Internet Equipment

> CSI provides the expertise to deliver the right equipment from the right supplier at the right price. Level Bid Coordination ensures apples-to-apples bids from a handful of prequalified system vendors who are competing for your business.

>> Project Management

> CSI ties it all together for you, helping to plan, make final recommendations and overseeing installation. CSI stays involved with the process until final approval and hand-off. Our clients deal with a single point of contact during the entire move process and beyond. CSI will provide a managed relocation of your network in three phases:

- 1] Strategic Planning and Recommendations
- 2] Phone System Bid Coordination
- 3] Installation Management and Cut-Over



>> Public Voice, Internet & Data Networks

> CSI evaluates your current services, determines temporary, redundant and long-term requirements as well as coordinates carrier installs. CSI will connect and test your network to ensure optimum operations including the redirection of your main number, fax and e-mail to the new location.

>> Internal Voice/ Data Wiring

> CSI will manage the turn-key installation of the wiring for your facility to allow for maximum high-speed flow of data and to provide for future expansion.

>> Why CSI?

The CSI advantage is that we represent all major Carriers, ISP's and System manufacturers.

Working with CSI, you receive strategically sound network access to voice/data and Internet as well as phone systems and Internet equipment from the appropriate vendors.

CSI evaluates the market and selects only "Best of Class" providers based on quality of service, network infrastructure, responsiveness and other important criteria. This stringent selection process benefits each decision we make with you.

>> How can CSI keep your costs down?

Each component of your network relocation is bid and won on a competitive basis.

- 1] Connectivity to voice/data /Internet networks
- 2] Phone systems
- 3] Inside Wiring

CSI navigates you through the decision process, levels the bids on systems and makes recommendations based on our experience in the field. Experience you want on the job.

>> When to contact CSI?

As soon as you decide to relocate your company. CSI can provide the answers to your questions ...

- 1] How quickly can we move?
- 2] What if there are delays?
- 3] Can we keep our main and fax and direct dial numbers?
- 4] With so many different trades, who will make sure all of the pieces fit and we are getting the best solutions possible?

CSI maintains an extensive, cross-referenced database that lists all available providers in your building

("Lit Building" Status). No single provider has the market perspective, or the day-to-day expertise that CSI does.



To find out more
and get a free analysis: 1.800.416.5323

CARRIERS [VOICE, DATA AND INTERNET]:

AT&T	Sprint	Qwest	MCI/Worldcom
Verizon	X/O	Cable & Wireless	OnSite Access
Gillette	Level 3	Intermedia	Global Crossing
Teligent	Winstar	PSINet	Digital Telemedia
Globix	UUNET	Savvis	ConEdison Tel

Activities include: Traffic analysis, Carrier negotiations, placing orders, coordinating temporary services pro-actively attaining Firm Order Commitment dates, procuring circuit identification and TSP contact information, installing/Testing T-1, DS-3, DSL, ISDN, and DID lines, tracking the event of installation, troubleshooting problems, retaining main # portability of all your important main numbers, etc.

PHONE SYSTEMS AND INTERNET EQUIPMENT:

Lucent	Nortel	Toshiba	NEC	Nitsuko	Artisoft
Motorola	Cisco	Newbridge	3Com	Adtran	
Ascend	Intertel	Siemens	Fujitsu	Altigen	

Solutions include: system inventory, RFP's, redundancy planning/disaster recovery, remote programming/diagnosis, T-1, hunt groups, direct inward dialing (DID), auto call distribution (ACD), database integration/call accounting, screen-pops, verification & accounting codes, plug & unplug, etc.

STRUCTURED CABLING MANUFACTURERS:

Siemon	Ortronics	AFCO	Panduit
Mohawk/CDT	Berk-Tek	Lucent	NORDX
Leviton	Krone	Belden	AMP
3M	3Com	IBM	CommScope
Wiremold	B-Line	ITT	

Options include: CAT 5/CAT 5E, CAT 6, Gigaspeed & Fiber Optic Cable, terminations, testing & certification. We specialize in the wiring of vertical riser systems for new or existing buildings as well as for any size commercial office or campus environment.

TESTIMONIAL:

"...We would never have thought that coordinating the various parties such as local carrier, phone vendor, network provider, wiring company, etc. would be so troublesome. CSI definitely simplified the process for us. I would recommend CSI to any company for cost cutting, moving, expanding or simply enhancing their overall connectivity."

-Jim Mack, Sr. Engineer, Nicholas Applegate Capital Management



connectivitySM
services

Connectivity Services, Inc.
ph: 212.689.8122 fax: 212.689.7549
www.connectivityservices.com
[e:] mail@connectivityservices.com